

**Polar IrDA USB Adapter and
Bridge Driver**
User manual

CONTENTS

1. GENERAL	3
2. DRIVER INSTALLATION	4
Driver Installation With Windows Vista and Windows 7 Operating Systems	7
3. HARDWARE INSTALLATION	12
Hardware Installation With Windows Vista	12
4. DETECTION	13
Detection With Windows Vista and Windows 7	13
5. ESTABLISHING IRDA CONNECTION WITH ANOTHER INFRARED DEVICE	15
6. REMOVE POLAR IRDA USB ADAPTER FROM THE COMPUTER	16
7. UNINSTALLATION	17
8. TROUBLESHOOTING.....	20
9. TECHNICAL SPECIFICATIONS	21
10.LIMITED POLAR INTERNATIONAL GUARANTEE	22
11.POLAR DISCLAIMER	23
.....	23

1. GENERAL

Polar IrDA USB Adapter is designed for infrared data transfer between Polar training computers and other infrared products. No other use is intended or implied.

To use the Polar IrDA USB Adapter and IrDA Bridge Driver you need Windows® 98, Windows® ME, Windows® 2000, Windows® XP, Windows® Vista or Windows® 7 operating system on your computer. Make sure you have also updated to the latest Service Pack of Microsoft Windows®.

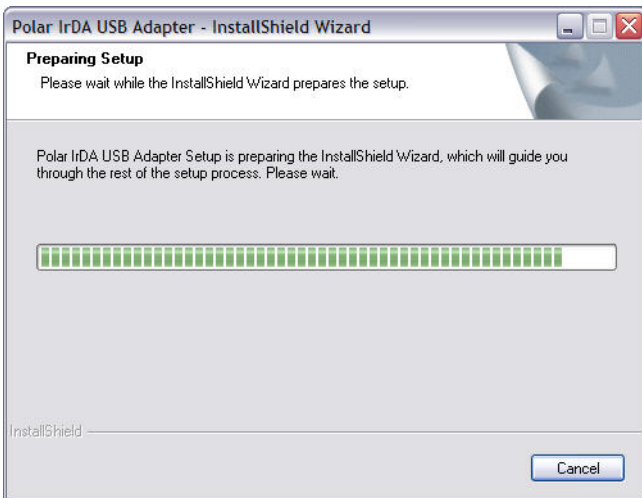
2. DRIVER INSTALLATION

- *Ensure that you have system administrator's rights to the PC before starting the installation.*
- *The instructions only work under Windows Operation System.*

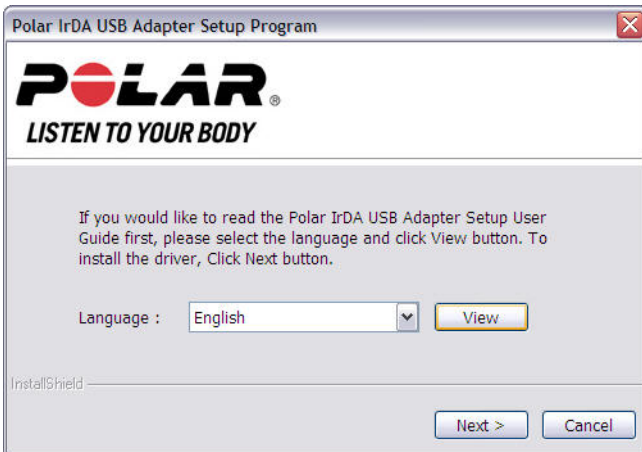
We recommend you insert the CD ROM in your PC and start by installing Polar IrDA Bridge Driver.

The Driver installation will start automatically. However, if it does not, open **My Computer** and double-click the CD/DVD Drive.

The following popup screen appears briefly indicating the installation has started:



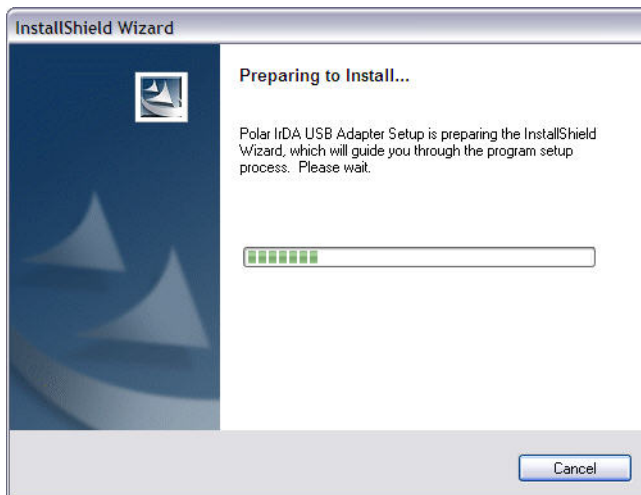
At this point you can open the user manual by clicking **View**. To continue installation, click **Next**:



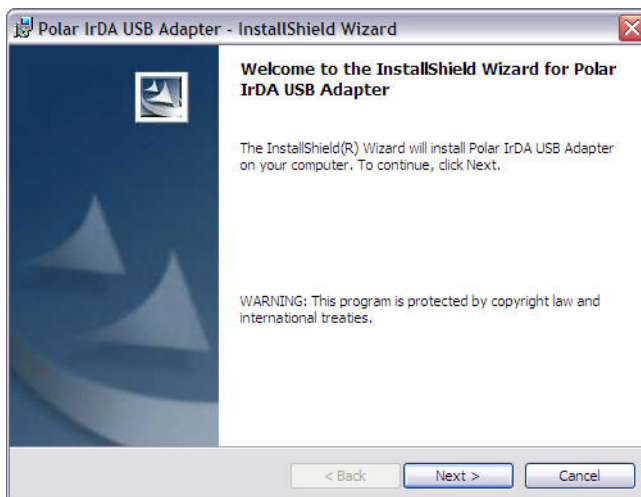
Select the language for installation and click **OK**:



The following popup screen appears:



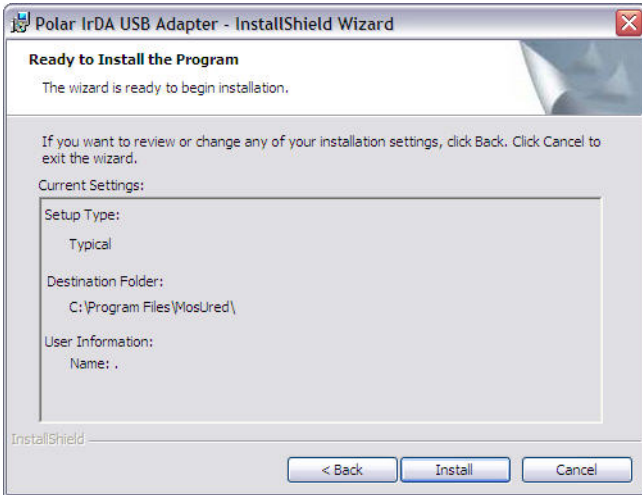
Click **Next** to continue:



To select a folder where setup will install files click **Change** or to accept the suggested folder, click **Next**:



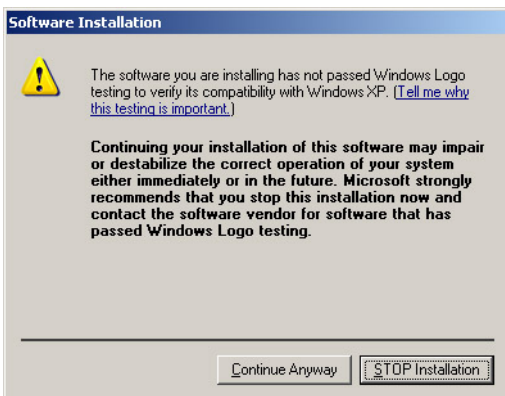
Click **Install** to begin installation. You can change the destination folder by clicking **Back**:



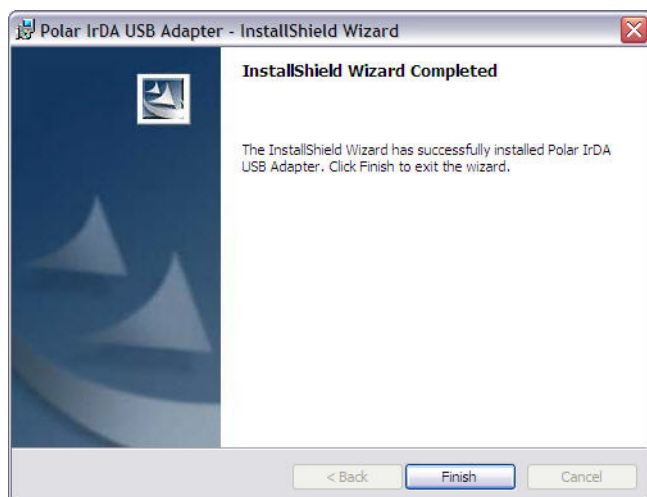
The following popup screen appears:



If the installer asks for you permission to continue with the installation, click **Continue anyway**.



Click **Finish** to complete IrDA Bridge Driver installation.



You can now safely plug in the IrDA USB Adapter.

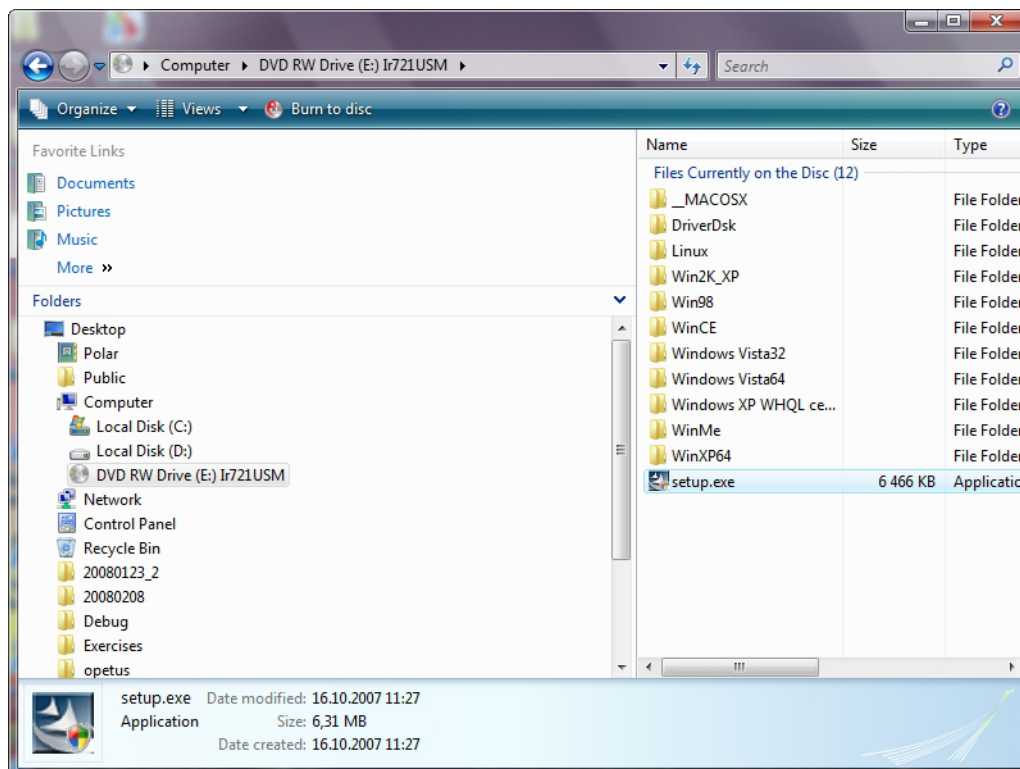
Driver Installation With Windows Vista and Windows 7 Operating Systems

With Windows Vista and Windows 7 operating systems follow the instructions below.

We recommend you insert the CD in your PC and start by installing the USB IrDA Bridge Driver.

The driver installation will start automatically. However, if it does not, open Computer and double-click the CD/DVD Drive. Select **Autorun** if necessary.

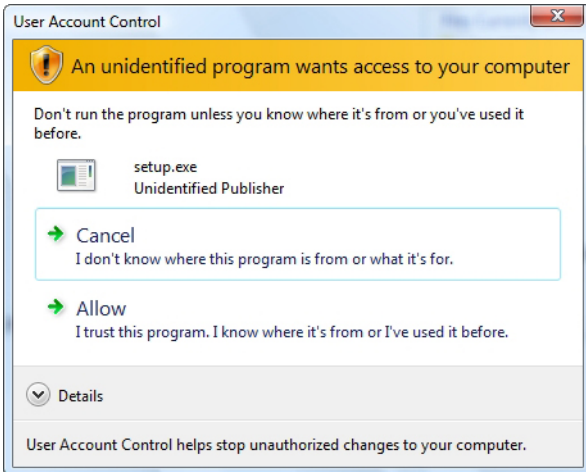
Double-click **setup.exe** to start the installation.



 You may need to run the **setup.exe** file as administrator to install the driver. To do so, right-click the file and select **Run as administrator**.

ENGLISH

Select **Allow** to continue with the installation process.



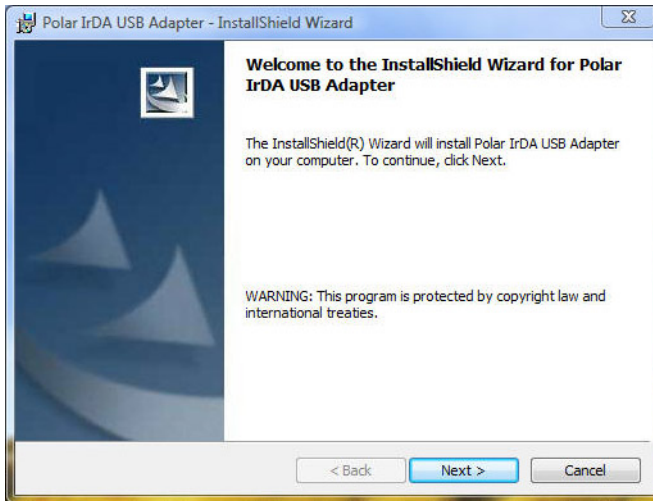
At this point, you can open the user manual by clicking **View**. To continue installation, click **Next**.



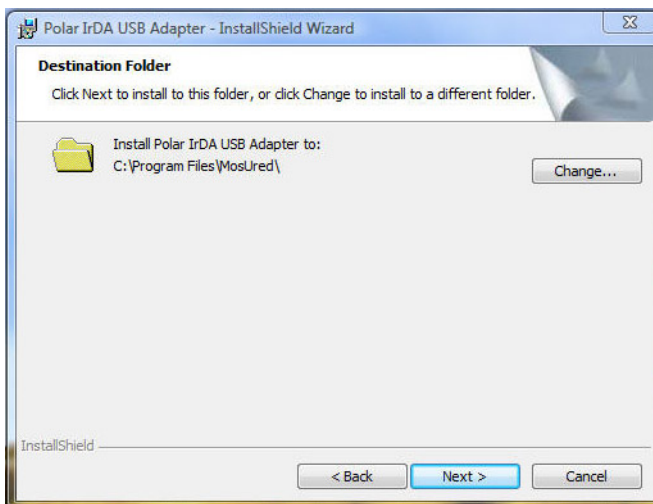
Select the language for installation and click **OK**.



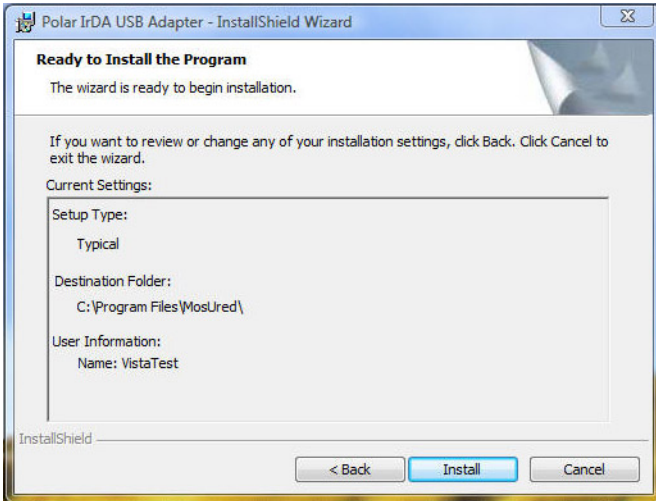
Wait until the following window appears. Click **Next** to continue.



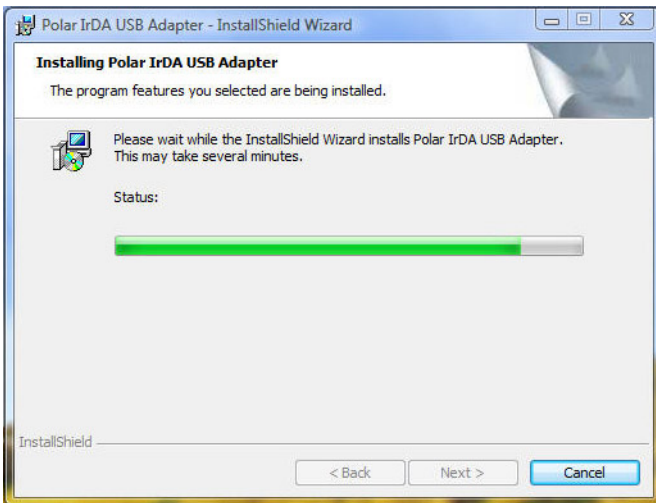
To select a destination folder for the installation, click **Change**, or to accept the suggested folder, click **Next**.



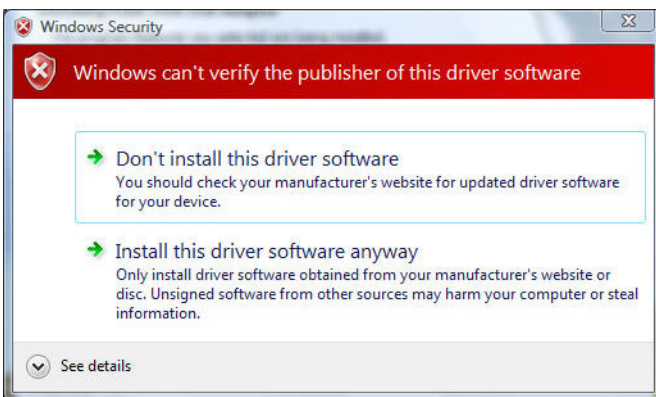
Click **Install** to begin the installation. To change the destination folder, click **Back**.



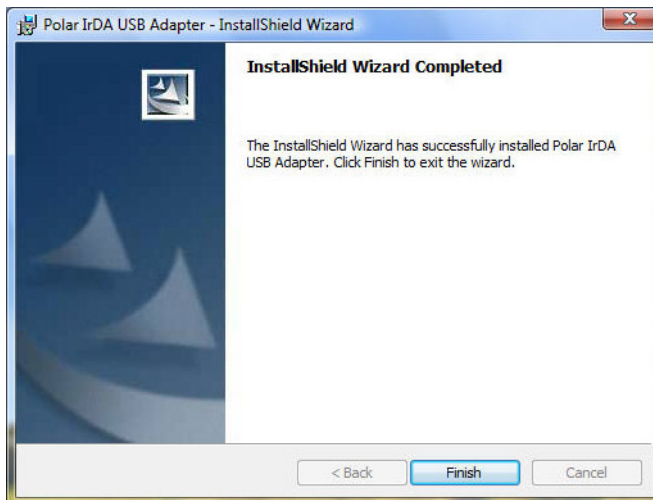
The following window appears.



If the installer asks for you permission to continue with the installation, click **Install this driver software anyway**.



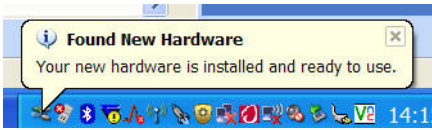
Click **Finish** to complete the IrDA Bridge driver installation.



You can now safely plug in the IrDA USB Adapter.

3. HARDWARE INSTALLATION

Plug in the Polar IrDA USB Adapter to the USB port of your computer. You will see a few pop-up screens momentarily as the device is being recognized (no user intervention required).

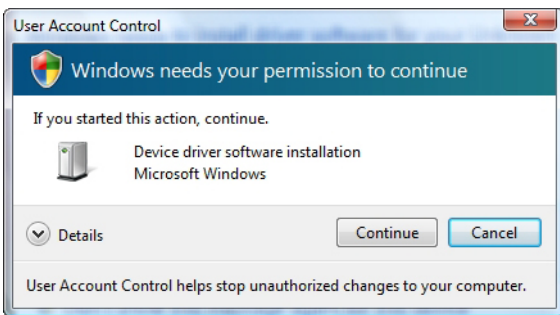
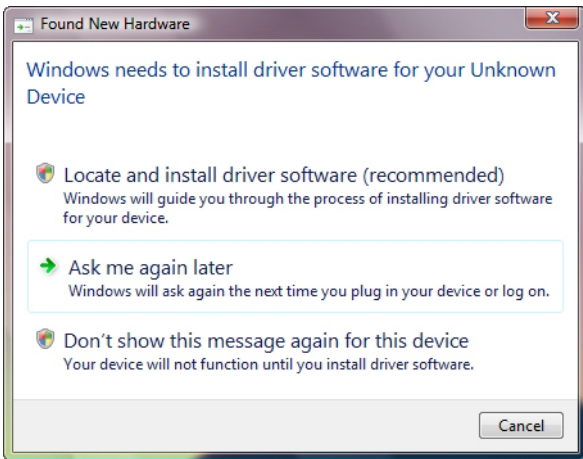


You can now start using your new Polar IrDA USB Adapter and USB IrDA Bridge Driver.

Hardware Installation With Windows Vista

For Windows® Vista operating system follow the instructions below.

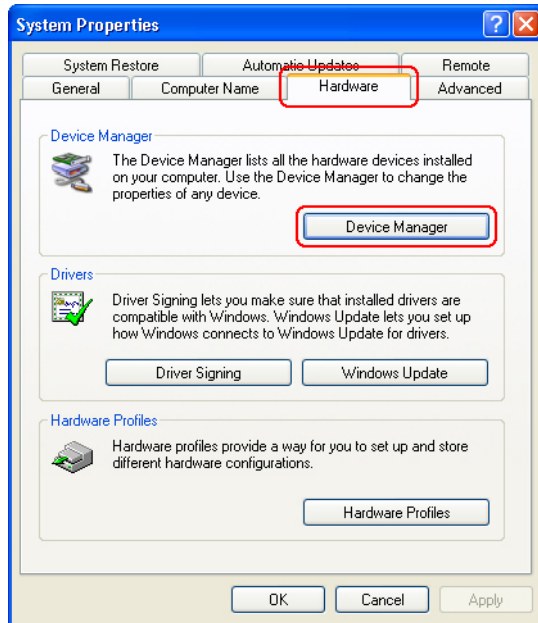
To install the hardware select the **Locate and install driver software (recommended)**. Follow the installation guide.



4. DETECTION

The Polar IrDA USB Adapter is installed correctly when the red LED light on the end of it starts to flash.

You can also check the installation by going to Start > Settings > Control Panel > System > Hardware > Device Manager.



Provided the driver has been correctly installed, 'Device Manager' contents and 'Infrared Devices' now include USB IrDA-Bridge.

Detection With Windows Vista and Windows 7

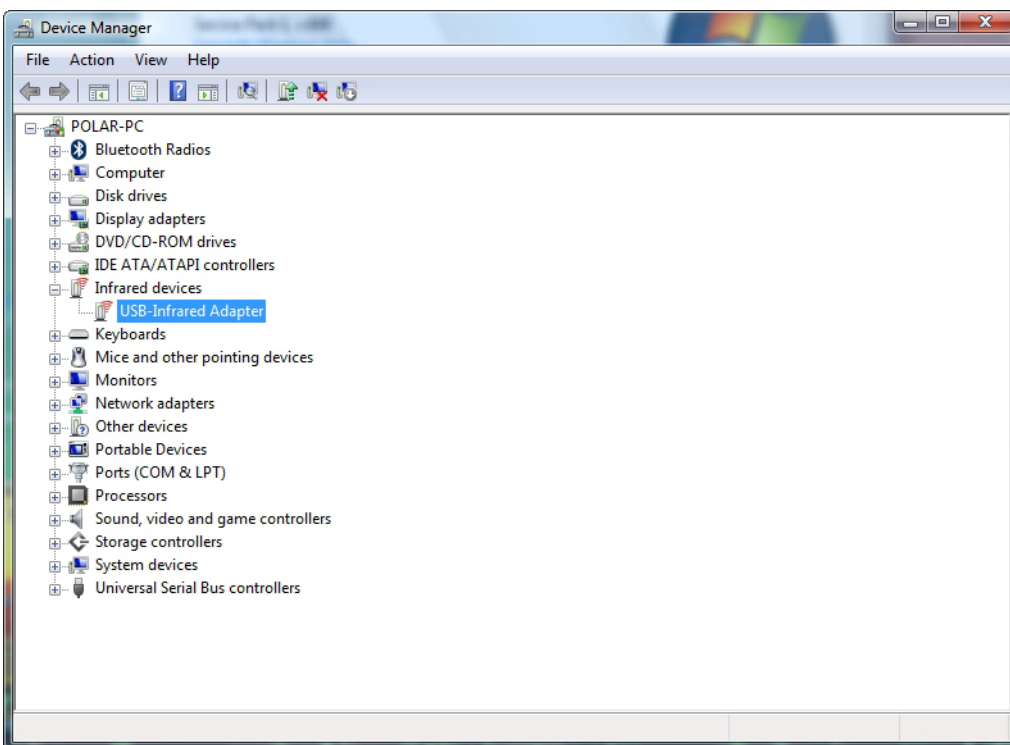
For Windows Vista and Windows 7 operating systems follow the instructions below.

The Polar IrDA USB Adapter is installed correctly when the red LED light on the end of it starts to flash.

You can also check the installation by going to Start > Settings > Control panel > System > Device manager.



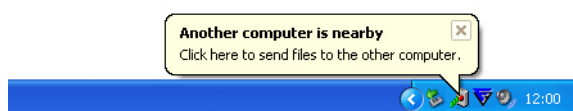
Provided the driver has been correctly installed, 'Device Manager' contents and 'Infrared Devices' now include (Polar) USB IrDA-Bridge.



5. ESTABLISHING IRDA CONNECTION WITH ANOTHER INFRARED DEVICE

After confirming the detection of USB IrDA Adapter, place your Polar infrared device and its IR window within one meter (39 inches) range from the infrared window at the end of the Adapter. The Polar device will be detected if it is within a 30 degree angle from the infrared window of the Adapter. Leave a minimum of 1 cm (0.4 inches) space between the devices.

An icon and a popup message will appear in the Toolbar indicating the Adapter is recognizing another infrared device within its range:



While the two devices are connected and data transfer is in progress, you will see the **Data Transfer** icon in your Toolbar. Moving the cursor onto this icon will display the connection speed of IrDA link.



However, if you see an **Infrared Connection** icon as pictured below, the two devices are connected but no data is being transferred:



As **Infrared Connection** icon appears on Toolbar, the **Wireless Link** icon appears on your desktop:



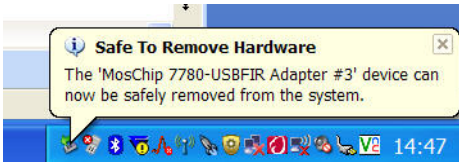
6. REMOVE POLAR IRDA USB ADAPTER FROM THE COMPUTER

To safely remove the Polar IrDA USB Adapter from your PC, click the **Safely Remove Hardware** icon:



Then select the **Safely remove USB IrDA Bridge**

Once **Safe To remove Hardware** is shown you can unplug the Polar IrDA USB Adapter from the PC.

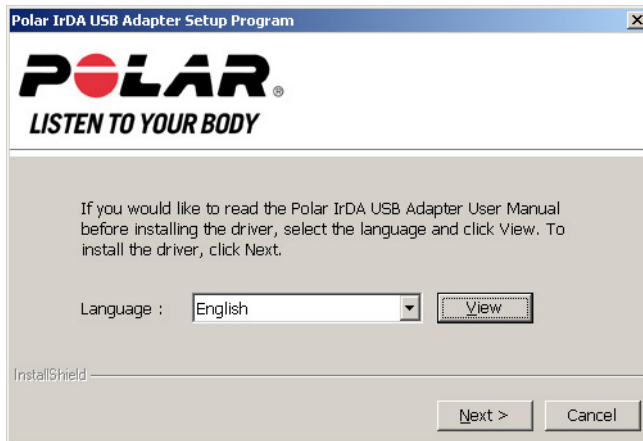


7. UNINSTALLATION

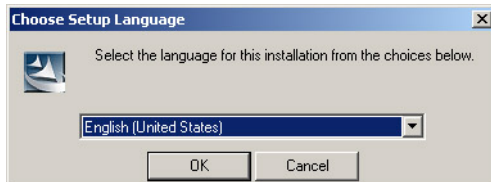
 *These uninstallation instructions apply to all supported Windows operating systems. Make sure you have administrator's rights before starting the uninstallation.*

To remove the Polar USB IrDA Bridge Driver from your PC, just re-install the CD into your PC. The uninstallation procedure will start automatically. However, if it does not, open **My Computer/Computer** and double-click the CD/DVD Drive.

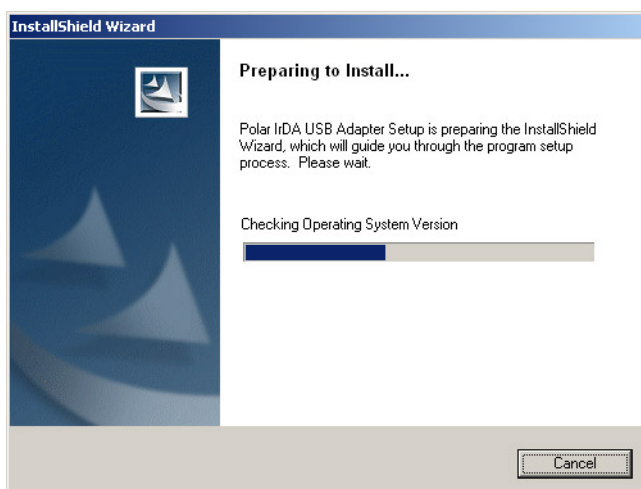
You can open the user manual by clicking **View**. To continue with the uninstallation, click **Next**:



Select the language for uninstallation and click **OK**:



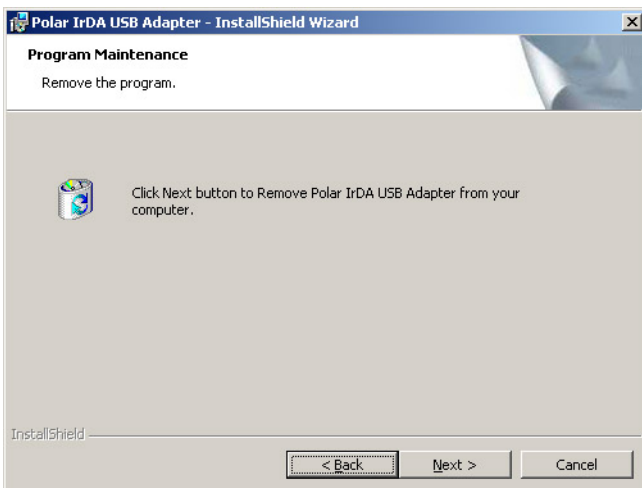
The following popup screen appears:



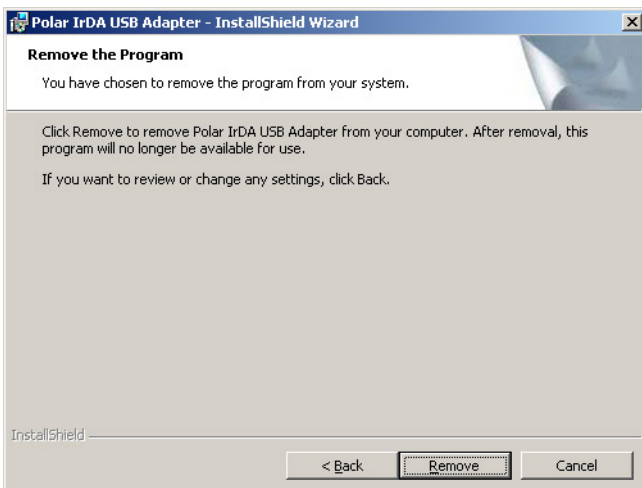
Click **Next** to continue:



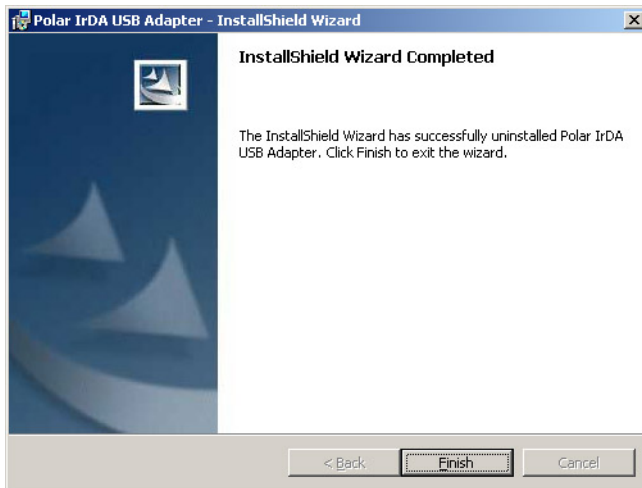
Click **Next** to continue:



Click **Remove** to continue:



Click **Finish** to complete the uninstallation.



8. TROUBLESHOOTING

If the communication fails, check that

- the infrared devices are positioned correctly. The infrared windows should be within 30 degree angle, no further than one meter (39 inches) and no closer than 1 cm (0.4 inches) from each other.
- nothing is blocking the path between the infrared windows of the devices.
- there is no other infrared device nearby.
- your Polar wrist unit is in the connection mode.
- the battery of your Polar wrist unit does not need replacing (i.e. low battery symbol on the display).

9. TECHNICAL SPECIFICATIONS

Polar IrDA USB Adapter

Connection	Connects directly to standard PC or Notebook USB port
Power Source	Direct from USB port, no external power required.
Speed	Transmits and receives data speed at 9.6K, 19.2K, 38.4K, 57.6K, 115.2K, 4Mbps (FIR), 16Mbps (VFIR)
Transmission Angle	max. 30 degrees
Transmission Distance	1 - 100 cm (0.4" - 39")
Operation System Compatibility	Microsoft Windows® 98SE/ME/2000/XP/Vista/7. Microsoft Windows® Service Pack update required before installation. MAC version 10.X Compiled for Linux Kernel 2.6.11 & RedHat & Debian
Polar IrDA USB Adapter is not water resistant	Do not expose it to humidity or use it outdoors.
Operating Temperatures	0°C to 50 °C / 32 °F to 122 °F

This device complies with part 15 Subpart B / Class B of the FCC Rules. Operation is subject to the following two conditions: 1. This device may not cause harmful interference, and 2. this device must accept any interference received, including interference that may cause undesired operation.

10. LIMITED POLAR INTERNATIONAL GUARANTEE

- This guarantee does not affect the consumer's statutory rights under applicable national or state laws in force, or the consumer's rights against the dealer arising from their sales/purchase contract.
- This limited Polar international guarantee is issued by Polar Electro Inc. for consumers who have purchased this product in the USA or Canada. This limited Polar international guarantee is issued by Polar Electro Oy for consumers who have purchased this product in other countries.
- Polar Electro Oy/Polar Electro Inc. guarantees the original consumer/purchaser of this device that the product will be free from defects in material or workmanship for two (2) years from the date of purchase.
- **The receipt of the original purchase is your proof of purchase!**
- The guarantee does not cover the battery, normal wear and tear, damage due to misuse, abuse, accidents or non-compliance with the precautions; improper maintenance, commercial use, cracked, broken or scratched cases/displays, elastic strap and Polar apparel.
- The guarantee does not cover any damage/s, losses, costs or expenses, direct, indirect or incidental, consequential or special, arising out of, or related to the product.
- Items purchased second hand are not covered by the two (2) year warranty, unless otherwise stipulated by local law.
- During the guarantee period, the product will be either repaired or replaced at any of the authorized Polar Service Centers regardless of the country of purchase.

Guarantee with respect to any product will be limited to countries where the product has been initially marketed.



This crossed out wheeled bin marking shows that Polar products are electronic devices and are in the scope of Directive 2002/96/EC of the European Parliament and of the Council on waste electrical and electronic equipment (WEEE) and batteries and accumulators used in products are in the scope of Directive 2006/66/EC of the European Parliament and of the Council of 6 September 2006 on batteries and accumulators and waste batteries and accumulators. These products and batteries/accumulators inside Polar products should thus be disposed of separately in EU countries.

Copyright © 2010 Polar Electro Oy, FIN-90440 KEMPELE.

Polar Electro Oy is a ISO 9001:2000 certified company. All rights reserved. No part of this manual may be used or reproduced in any form or by any means without prior written permission of Polar Electro Oy.

11. POLAR DISCLAIMER

- The content of this manual is for informational purposes only. The products it describes are subject to change without prior notice, due to the manufacturer's continuous development program.
- Polar Electro Inc./Polar Electro Oy makes no representations or warranties with respect to this manual or with respect to the products described herein.
- Polar Electro Inc./Polar Electro Oy shall not be liable for any damages, losses, costs or expenses, direct, indirect or incidental, consequential or special, arising out of, or related to the use of this material of the products described herein.

Manufactured by:

Polar Electro Oy
Professorintie 5
90440 Kempele
FINLAND
Tel: +358 8 5202 100
Fax: +358 8 5202 300
www.polar.fi

17936126.02 ENG C

05/2010